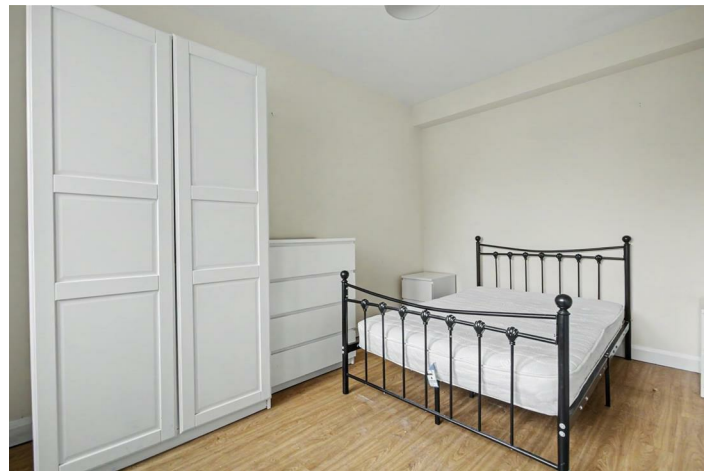


TO LET



House - Semi-Detached (EPC Rating: C)

ROOM 5, 111-112 NORTH DENES ROAD,  
GREAT YARMOUTH, NR30 4LN

Per Month

£475pcm

- All bills included
- spacious single room
- Communal Living room
- Communal Dining room
- Ideal location
- No Deposit option available



# 1 Bedroom House share - located in Great Yarmouth

**\*\*No Deposit Option Available\*\***

**\*\*All Bills included\*\***

This semi detached house offers a unique opportunity for those seeking a comfortable living arrangement. The property features a single room within a spacious house share, making it an ideal choice for individuals looking for a friendly and sociable environment.

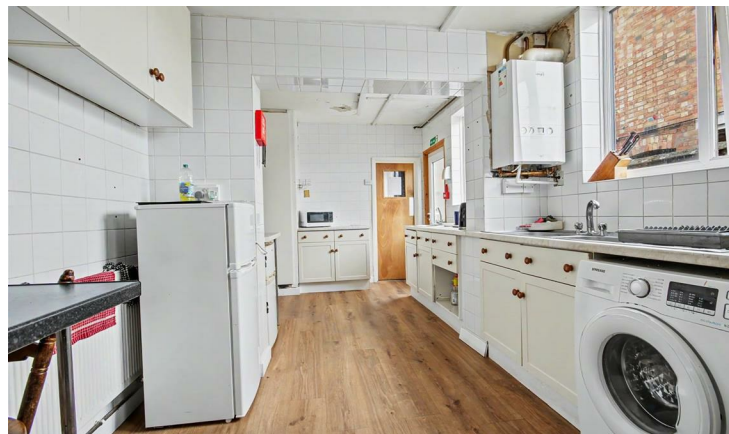
Residents will benefit from access to a well-equipped communal kitchen, perfect for preparing meals and enjoying culinary adventures with housemates. The communal living room provides a welcoming space to relax and unwind, fostering a sense of community among residents.

Great Yarmouth is renowned for its beautiful beaches and vibrant seaside attractions, ensuring that you will never be short of activities to enjoy. With local amenities and transport links nearby, this property is perfectly situated for both convenience and leisure.

This house share presents an excellent opportunity for those who appreciate a blend of privacy and community living in a delightful location. Whether you are a student, a young professional, or simply seeking a change of scenery, this property is worth considering. Embrace the coastal lifestyle and make this house share your new home



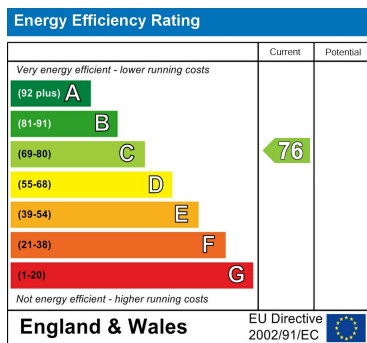
NORWICH LETTINGS | 3 VISION PARK, QUEENS HILLS, NORWICH, NR8 5HD



NORWICH LETTINGS | 3 VISION PARK, QUEENS HILLS, NORWICH, NR8 5HD



### Energy Performance Graph




# Reposit

Rent without a deposit

[norwich@thinkproperty.ltd](mailto:norwich@thinkproperty.ltd)  
<https://www.thinkproperty.ltd/>

Call us on

01603 338433

Agents Note: Whilst every care has been taken to prepare these particulars, they are for guidance purposes only. All measurements are approximate and are for general guidance purposes only and whilst every care has been taken to ensure their accuracy, they should not be relied upon and potential buyers are advised to recheck the measurements.

